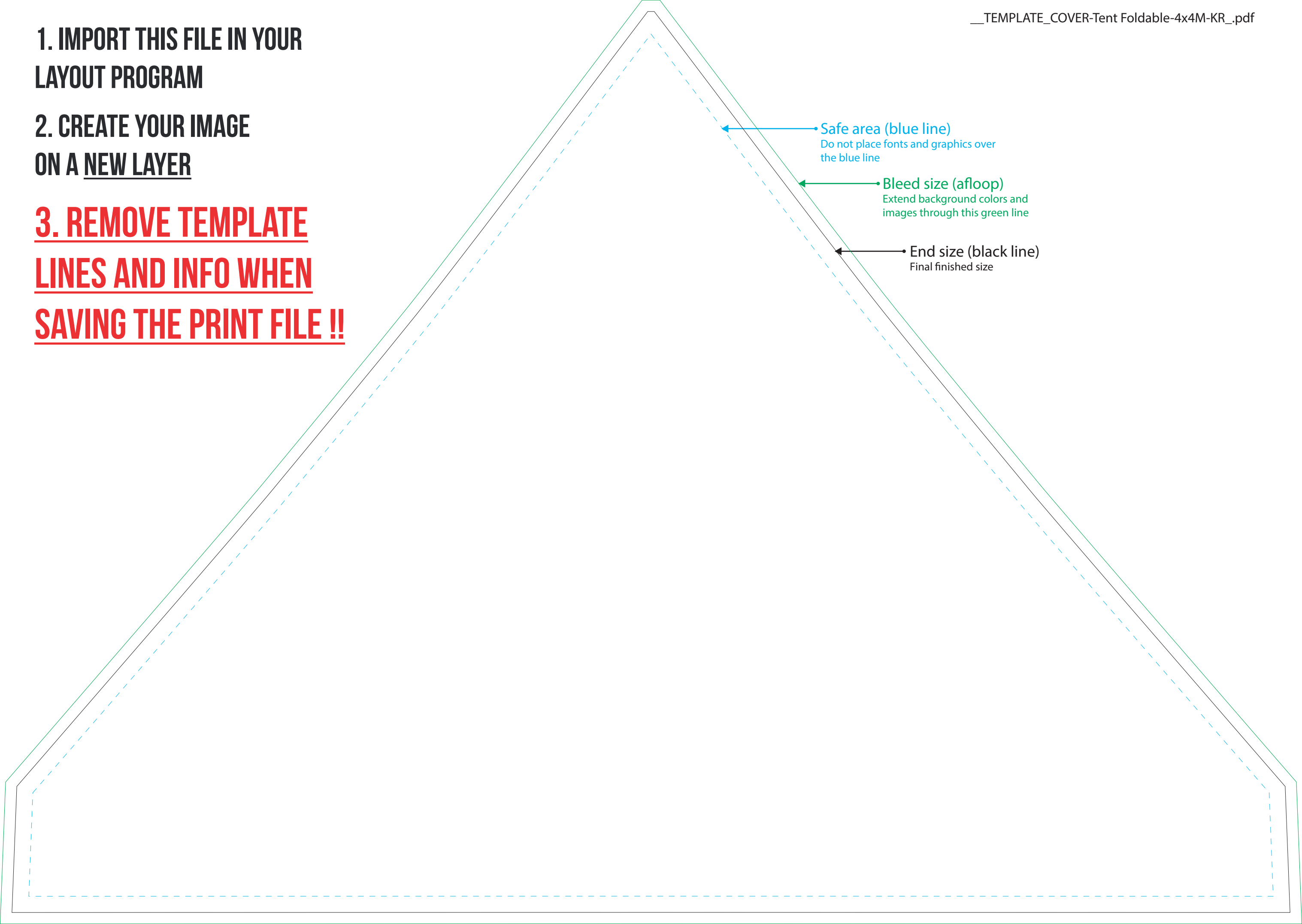


1. IMPORT THIS FILE IN YOUR LAYOUT PROGRAM

2. CREATE YOUR IMAGE ON A NEW LAYER

3. REMOVE TEMPLATE LINES AND INFO WHEN SAVING THE PRINT FILE !!



• Safe area (blue line)

Do not place fonts and graphics over the blue line

• Bleed size (afloop)

Extend background colors and images through this green line

• End size (black line)

Final finished size